



# Eetamax Energy Efficient Lighting Systems

## PRODUCT TECHNICAL DATASHEET



**MODEL NAME**

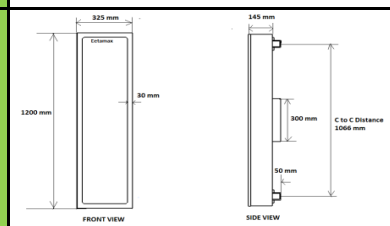
**EELS 120W 4X1 Linear HB**

Characteristic		Parameters	
<b>MECHANICAL SPECIFICATION</b>	Fixture Housing	M.S powder coated housing with aluminium sheet (heat sink)	
	Fixture Dimension	1200 mm X 325 mm X 145 mm	
	Diffuser Closure	Polystyrene Diffuser	
	Weight	8.2 Kg	
	IP Standard	IP40	
<b>LUMINARIES</b>	Total Wattage	120 Watts	
	Initial Lumen	12600 Lumen	
	Luminaire Efficacy (Lm/Watt)	105 Lm/W	
	Life	50,000 Burning Hours	
	Starting Time	Rapid (0.2 sec)	
	Operating Temperature	From 0° to +60° C	
<b>LED DRIVER</b>	Type of Driver	Constant Current (CC)	
	Input Voltage Range	150 VAC ~ 265 VAC	
	Frequency Range	50 Hz	
	Power factor	> 0.98	
	Total Harmonic Distortion	< 10 %	
	Surge Protection	3.75 Kv	
	Protection	Surge Protection, Output short circuit protection, Over load Protection, Over Voltage Protection	
<b>LED LAMP</b>	Light Source	SMD LED	
	Lamp Efficacy	> 150 Lm/W	
	Colour Temperature	3000 K - 6500 K	
	CRI	> 80	
	Certification/Report	LM80 / Photo Bio.Test	
<b>OPTICS</b>	Identification Feature	Unique Serial No. Printed on each Lamp	
	Beam Angle	120°	
	Optics Type	Milky Diffuser for Glare Free Symmetric Light Distribution	
MOC of Optics	Polystyrene Sheet		
<b>APPLICATION</b>		The luminaire can be used for lighting in engineering, pharmaceutical, food industries, etc	

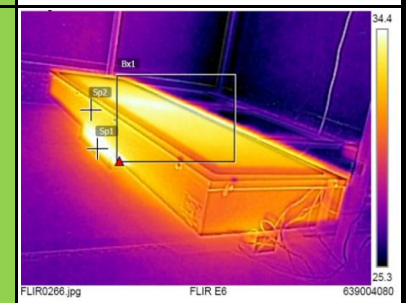
**PRODUCT IMAGE**



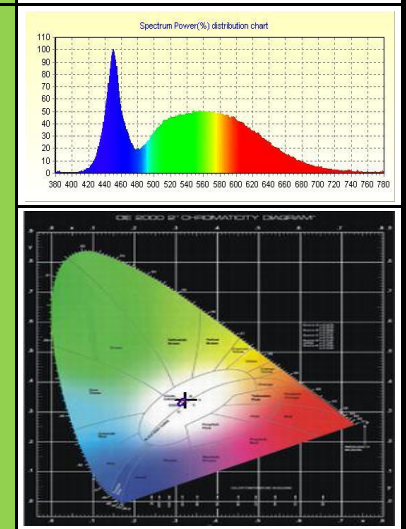
**SCHEMATIC IMAGE**



**THERMAL IMAGE**



**LED SPECTRUM**



**LIGHT DISTRIBUTION**

