



Eetamax Energy Efficient Lighting Systems

PRODUCT TECHNICAL DATASHEET



MODEL NAME

EELS 19W 4ft Batten

Characteristic

Parameters

MECHANICAL SPECIFICATION

Fixture Housing

Aluminium Extrusion + Polycarbonate

Fixture Dimension

1140 mm X 36 mm

Diffuser Closure

Milky Diffuser for glare-free symmetric light distribution

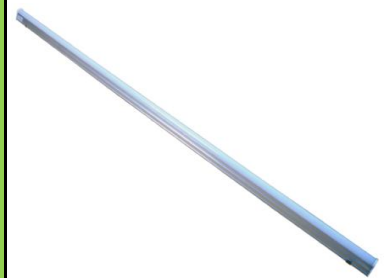
Weight

0.250 Kg

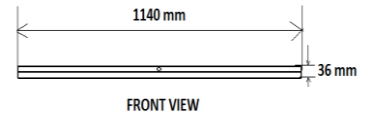
IP Standard

IP20

PRODUCT IMAGE



SCHEMATIC IMAGE



LUMINARIES

Total Wattage

19 Watts

Initial Lumen

2470 Lumen

Luminaire Efficacy (Lm/Watt)

130 Lm/W

Life

40,000 Burning Hours

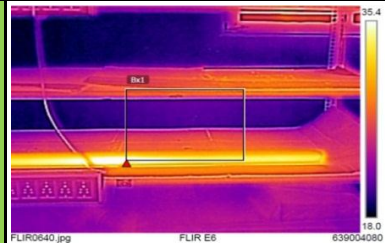
Starting Time

Rapid (0.2 sec)

Operating Temperature

From 0° to +60°C

THERMAL IMAGE



LED DRIVER

Type of Driver

Constant Current (CC)

Input Voltage Range

150 VAC ~ 265 VAC

Frequency Range

50 Hz

Power factor

> 0.98

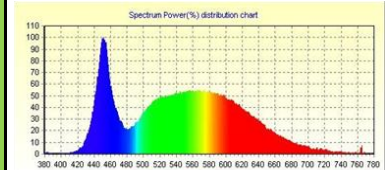
Total Harmonic Distortion

< 20 %

Surge Protection

2.5 Kv

LED SPECTRUM



LED LAMP

Light Source

SMD LED

Lamp Efficacy

> 130 Lm/W

Colour Temperature

3000 K - 6500 K

CRI

> 80

Certification/Report

LM80

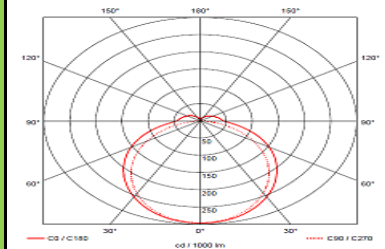
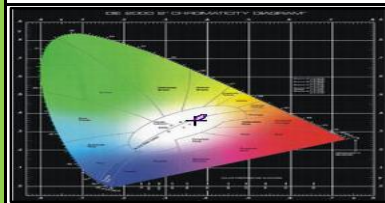
Identification Feature

Unique Serial No. Printed on each Lamp

Beam Angle

120° / 170°

LIGHT DISTRIBUTION



APPLICATION

The luminaire can be used for lighting in Houses, Shops, Schools, Office Interiors, Spinning Mills, Colleges, Small Cafeterias, Hotels, Common Area Lighting, Parking Areas, Basements, etc.

