



Eetamax Energy Efficient Lighting Systems

PRODUCT TECHNICAL DATASHEET



MODEL NAME

EELS 9W 2ft Batten

Characteristic

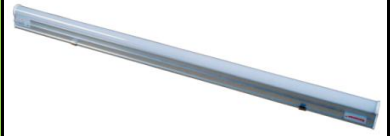
Parameters

MECHANICAL SPECIFICATION

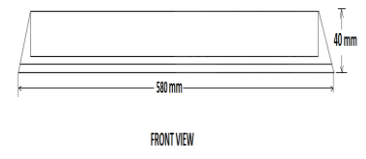
Fixture Housing
Fixture Dimension
Diffuser Closure
Weight
IP Standard

Aluminium Extrusion + Polycarbonate
 580 mm X 40 mm
 Milky Diffuser for glare-free symmetric light distribution
 0.130 Kg
 IP20

PRODUCT IMAGE



SCHEMATIC IMAGE

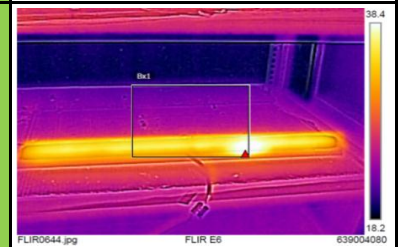


LUMINARIES

Total Wattage
Initial Lumen
Luminaire Efficacy (Lm/Watt)
Life
Starting Time
Operating Temperature

9 Watts
 900 Lumen
 100 Lm/W
 40,000 Burning Hours
 Rapid (0.2 sec)
 From 0° to +60°C

THERMAL IMAGE

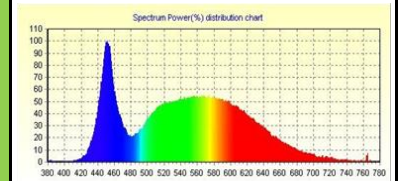


LED DRIVER

Type of Driver
Input Voltage Range
Frequency Range
Power factor
Total Harmonic Distortion
Surge Protection

Constant Current (CC)
 150 VAC ~ 265 VAC
 50 Hz
 > 0.98
 < 20 %
 2.5 Kv

LED SPECTRUM

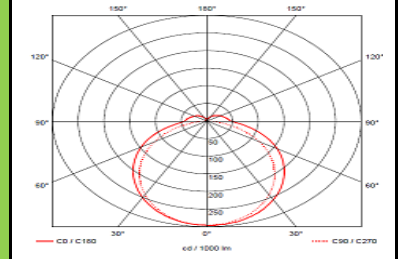
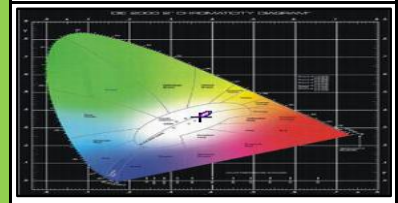


LED LAMP

Light Source
Lamp Efficacy
Colour Temperature
CRI
Certification/Report
Identification Feature
Beam Angle

SMD LED
 > 130 Lm/W
 3000 K - 6500 K
 > 80
 LM80
 Unique Serial No. Printed on each Lamp
 120° / 170°

LIGHT DISTRIBUTION



OPTICS

Optics Type
MOC of Optics

Milky Diffuser
 Milky Polycarbonate Cover

APPLICATION

The luminaire can be used for lighting in Houses, Shops, Schools, Office Interiors, Spinning Mills, Colleges, Small Cafeterias, Hotels, Common Area Lighting, Parking Areas, Basements, etc.

