

MODEL NAME
EELS 240W COB FL with lens + SPD
Characteristic
Parameters
MECHANICAL SPECIFICATION
Fixture Housing

Fitting housing in Aluminium Die Casting

Fixture Dimension

670 mm X 320 mm X 250 mm

Diffuser Closure

Toughened Glass

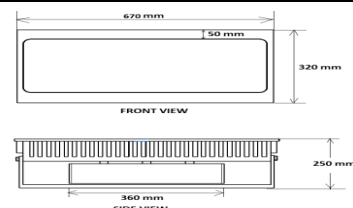
Weight

14.730 Kg

IP Standard

IP65

PRODUCT IMAGE

SCHEMATIC IMAGE

LUMINAIRES
Total Wattage

240 Watts

Initial Lumen

28800 Lumen

Luminaire Efficacy (Lm/Watt)

120 Lm/W

Life

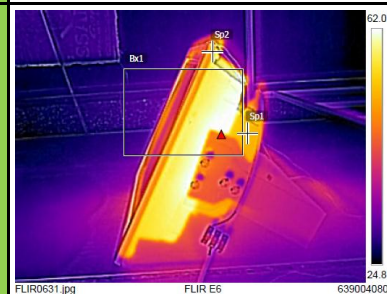
50,000 Burning Hours

Starting Time

Rapid (0.2 sec)

Operating Temperature

From -20° to +60° C

THERMAL IMAGE

LED DRIVER
Type of Driver

Constant Current (CC)

Input Voltage Range

100 VAC ~ 305 VAC

Frequency Range

50 Hz

Power factor

> 0.98

Total Harmonic Distortion

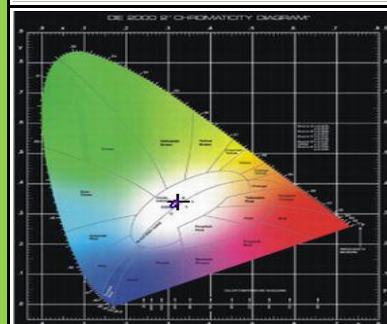
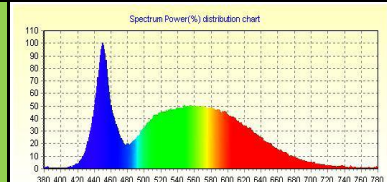
< 10 %

Surge Protection

6 Kv

Protection

Thermal Protection + Output Short Circuit Protection, Over Load Protection, Over Voltage Protection

LED SPECTRUM

LED LAMP
Light Source

COB LED

Lamp Efficacy

> 150 Lm/W

Colour Temperature

3000 K - 6500 K

CRI

> 80

Certification/Report

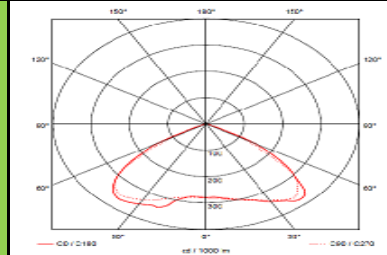
LM80 / Photo Bio.Test

Identification Feature

Unique Serial No. Printed on each Lamp

Beam Angle

120°

LIGHT DISTRIBUTION

OPTICS
Optics Type

Glass Lens

MOC of Optics

Borosilicate Glass

APPLICATION

Small/Medium Open Areas, Architectural & Building Façade Lighting, Security Lighting, Lighting of Industrial & External Storage Areas, Industrial Outdoor Areas, Ports & Container Terminals, etc.

