

MODEL NAME
EELS 80W COB FL with lens + SPD
Characteristic
Parameters
MECHANICAL SPECIFICATION
Fixture Housing

Fitting housing in Aluminium Die Casting

Fixture Dimension

380 mm X 300 mm X 240 mm

Diffuser Closure

Toughened Glass

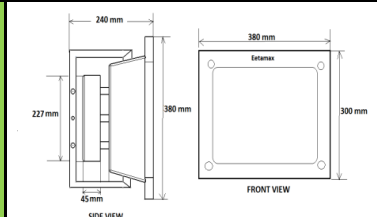
Weight

7 Kg

IP Standard

IP65

PRODUCT IMAGE

SCHEMATIC IMAGE

LUMINARIES
Total Wattage

80 Watts

Initial Lumen

9600 Lumen

Luminaire Efficacy (Lm/Watt)

120 Lm/W

Life

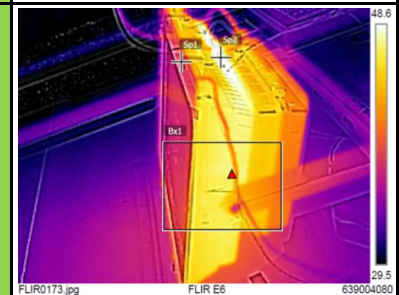
50,000 Burning Hours

Starting Time

Rapid (0.2 sec)

Operating Temperature

From -20° to +60° C

THERMAL IMAGE

LED DRIVER
Type of Driver

Constant Current (CC)

Input Voltage Range

150 VAC ~ 265 VAC

Frequency Range

50 Hz

Power factor

> 0.98

Total Harmonic Distortion

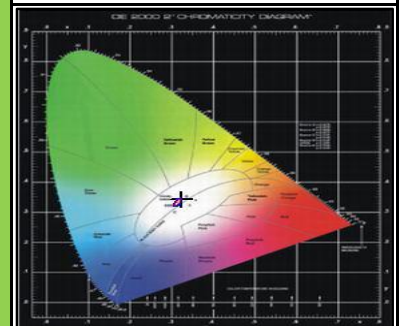
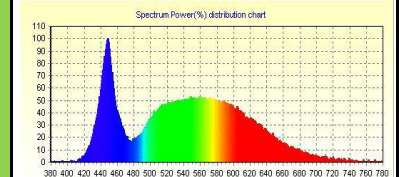
< 10 %

Surge Protection

3.75 Kv

Protection

Surge Protection, Output Short Circuit Protection, Open Load Protection, Over Voltage Protection.

LED SPECTRUM

LED LAMP
Light Source

COB LED

Lamp Efficacy

> 150 Lm/W

Colour Temperature

3000 K - 6500 K

CRI

> 80

Certification/Report

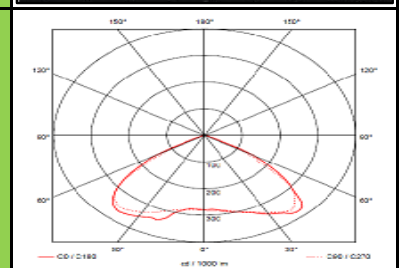
LM80 / Photo Bio.Test

Identification Feature

Unique Serial No. Printed on each Lamp

Beam Angle

120°

LIGHT DISTRIBUTION

OPTICS
Optics Type

Glass Lens

MOC of Optics

Borosilicate Glass

APPLICATION

Small/Medium Open Areas, Architectural & Building Façade Lighting, Security Lighting, Lighting of Industrial & External Storage Areas, Industrial Outdoor Areas, Ports & Container Terminals, etc.

