

Eetamax LED offers

Flameproof Lights



Industrial Lighting for Hazardous Areas
Weatherproof | Flameproof | Explosionproof
Over 2 decades of industrial lighting experience
ISO 9001 : 2015 Certified Company

CMRI
Certified
Products

GAS group
IIA, IIB or
IIC

Zone 1,2
Zone 21,22

Inbuilt
Electronic
Protections

 **Lighting**
Design
Support

Eetamax At a glance

Eetamax is a manufacturer and supplier of high performance industrial lights and lighting control solutions. Our Core competence is developing, manufacturing, and selling general and special purpose lighting fittings.

We make 300+ products for a wide range of general and special applications. We provide connected lighting control solutions based on DALI, RF, and other IOT technologies.



Industrial Lighting Specialist



300+ Products

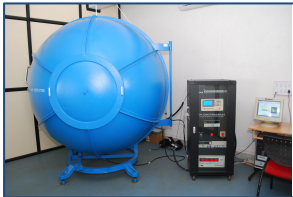
20+ YEARS

20+ Years Experience

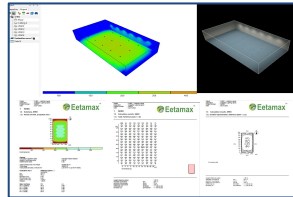


Lighting Control

Factory Facilities



Photometry Lab Integrated Sphere



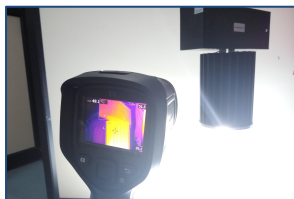
Lighting Design Center



Pick & Place Machine



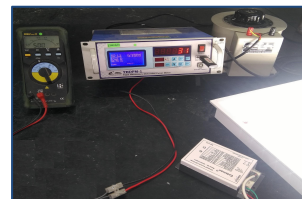
5 Zone Reflow Oven



Thermal Imager



Temperature Controlled oven



Power Analysis



HV Test + Insulation

Memberships & Certification



Digital Illumination Interface Alliance (DiiA)



Indian Society of Lighting Engineers



ELCOMA of India



ABS Quality Evaluations
ISO 9001 :2015

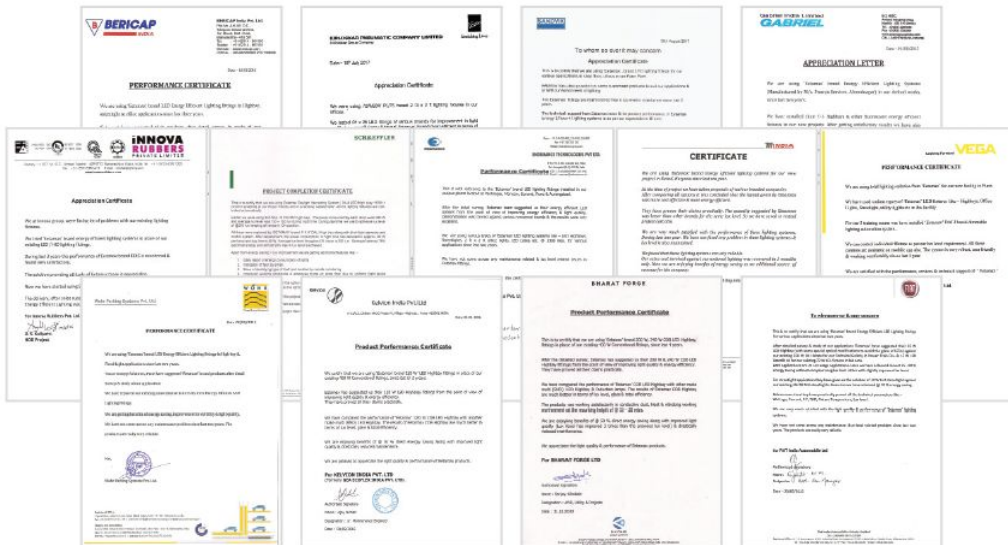


BIS Certified Products

Our Esteemed Clients



Clients Testimonials



Key Highlights

- Technically superior products
- Maintenance free performance
- High efficacy
- Lumen maintenance over the years
- Custom solutions
- Lighting design support
- Lighting Control Solutions

Eetamax Flameproof Lighting Products

Eetamax caters to the lighting requirements for Hazardous Locations classified under the NEC Code IIA, IIB or IEC/ATEX Zone 1, Zone 2, Zone 21, Zone 22. For requirements of lights to be used in other classified zones, please reach out to our local sales representatives.

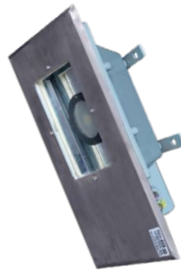
Flameproof Applications Sectors

- Oil & Gas
- Process Industries
- Refineries
- Offshore Platforms
- Power Generations
- Process Industries
- Munitions Storage Area
- Pharmaceutical Plants
- Chemical Industries
- Sugar Industries
- Power Generations
- Nuclear Facilities

Eetamax Flameproof Product Range



**Flameproof
Flower Model**



**Flameproof
Rectangular Cleanrooms**



**Flameproof
Round Cleanrooms**



**Flameproof
Bulkhead**



**Flameproof
Street Lights**



**Flameproof
Tube Lights**



**Flameproof
Hand Lamp**



**Flameproof
Vessel/Reactor Lamp**

Flameproof Lighting Standards

In Electrical engineering, hazardous locations (sometimes abbreviated to HazLoc, pronounced Haz-Lōk) are defined as places where fire or explosion hazards may exist due to flammable gases, flammable liquid-produced vapors, combustible liquid-produced vapors, combustible dusts, or ignitable fibers/flyings present in the air in quantities sufficient to produce explosive or ignitable mixtures.




Electrical equipment that must be installed in such classified locations should be specially designed and tested to ensure it does not initiate an explosion, due to arcing contacts or high surface temperature of equipment.

CSIR-Central Institute of Mining and Fuel Research (CSIR-CIMFR), previously known as Central Mining Research Institute (CMRI) and Central Fuel Research Institute (CFRI), is based in Dhanbad, Jharkhand, India. CSIR-CIMFR is the prime approving body for flameproof lighting enclosures in India. Petroleum and Explosives Safety Organisation (PESO) is an alternate approving government agency.

Eetamax Products Certifications :

- ✓ CIMFR / PESO Certified products
- ✓ Gas groups - IIA, IIB, IIC
- ✓ For Gas or Vapour - Zone 1 & Zone 2
- ✓ For Dust - Zone 21 & Zone 22

Hazardous Location Classification

	Hazardous Material	Class	Flammable Medium	Hazardous Locations	Hazardous Locations
	Gases or Vapors	Class I	Gases or vapours	Continuously, for long periods	Zone 0
	Combustible dust	Class II		Likely to occur	Zone 1
	Ignitable fibers	Class III		Infrequently, for short periods	Zone 2
			Dust	Continuously, for long periods	Zone 20
				Likely to occur	Zone 21
				Infrequently, for short periods	Zone 22



Flameproof Flower Model Range - Well Glass / Flood / High Bay



Most versatile general purpose flameproof lighting product used for indoor as well as outdoor industrial applications in Hazardous Locations (HazLoc).



Certifications

- Gas Group - IIA,IIB or IIIC
- Area Classifications - Zone 1, 2 & Zone 21 & 22
- IP66 Rated Product

Product Specification

- System Efficacy - >120 lm/w
- Power Factor - >0.97
- THD - <10%
- Protections : Wide input voltage range, overload, SCP,OVP
- Made in aluminium Die cast gray Powder coated housing
- Cradle provide to hang the fitting

Available Variants :

- 30W , 40W , 50W , 60W, 80W, 100W, 120W, 150W, 200W

Cleanroom Product Range



EELS Flameproof Cleanroom Lights

Flameproof Lights for application in Chemical Processing or Storage Spaces within Cleanroom areas. Comes with an attached SS plates at the bottom. Available in round and rectangular Versions.



Certifications

- Gas Group - IIA,IIB or IIIC
- Area Classifications - Zone 1, 2 & Zone 21 & 22
- IP65 Rated Product

Available Variants :

- Round - 15W , 30W
- Rectangular - 15W, 30W, 40W, 45W, 60W

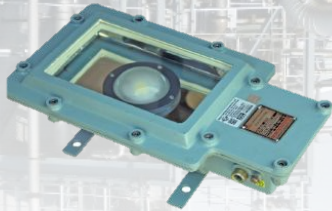
Product Specification :

- System Efficacy - >90 lm/w
- Power Factor - >0.97
- THD - <10%
- Protections : Wide input voltage range, overload, SCP, OVP
- Made in aluminium Die cast gray Powder coated housing

Flameproof Product Range



EELS Flameproof Bulkhead



EELS Flameproof Street Light



Flameproof Bulkhead lights Made in aluminium Die cast, Powder coated, IP65 flameproof Housing in Rectangular & Round aesthetic . Flameproof street lights available in a similar rectangular housing.

Certifications

- Gas Group - IIA, IIB or IIIC
- Area Classifications - Zone 1, 2 & Zone 21 & 22

Product Specification :

- System Efficacy - >90 lm/w
- Power Factor - >0.97
- THD - <10%
- Protections : Wide input voltage range, overload, SCP, OVP
- Made in aluminium Die cast gray Powder coated housing

Available Variants :

- Round Bulkhead – 20W , 30W
- Rectangular Bulkhead – 15W, 30W, 40W, 50W, 60W
- Street Light - 15W , 30W, 40W, 60W

Flameproof Product Range



EELS Flameproof Tube Lights



Flameproof 4 ft tube lights available in single tube & two tube lights version. Comes with a separate driver with inbuilt protections for long life.

Certifications

- Gas Group - IIA,IIB or IIC
- Area Classifications - Zone 1, 2 & Zone 21 & 22

Available Variants :

- 1x19W, 2X19W

EELS Flameproof Hand / Vessel Lamps



Flameproof Hand lamp and vessel lamp or sight glass lamp is specially designed for inspection and offers a clear vision inside reactor vessel area giving adequate illumination coverage.

Certifications

- Gas Group - IIA,IIB or IIC
- Area Classifications - Zone 1, 2 & Zone 21 & 22

Available Variants :

- Hand Lamp – 15W
- Vessel Lamp – 15W



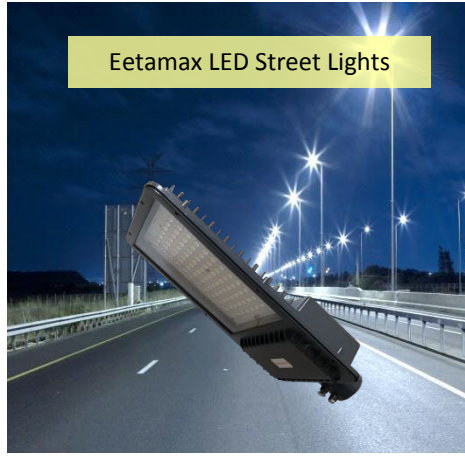
Product Technical Specifications

- Technically Superior products
- Gas groups - IIA,IIB,IIC
- Gas or Vapour - Zone 1, Zone 2
- Dust - Zone 21, Zone 22
- Wide wattage range available
- System Efficacy - Upto >120 lm/w Products
- Maintenance Free Lighting with inbuilt electronic protections
- Lumen Maintenance over the years
- Glare free lighting
- Good Thermal Management
- Ingress Protection - IP66 & IP65 rated weatherproof products
- Impact Resistance - IK08
- Wide range of CCT available, 6500K is the default standard
- Higher CRI i.e. >70
- L70 Life >60,000
- Wide input voltage range, THD <10%, Power Factor >0.97
- Overload Protection, Short Circuit protection, Over Voltage Protection
- Uniform Light distribution for good Lux Levels
- Temperature Class – T6
- Grey Epoxy Powder Coated Pressure Die Cast LM6 Aluminium Alloy Housing
- Cable Entry - Loop in & Loop Out facility to avoid Junction Box cost

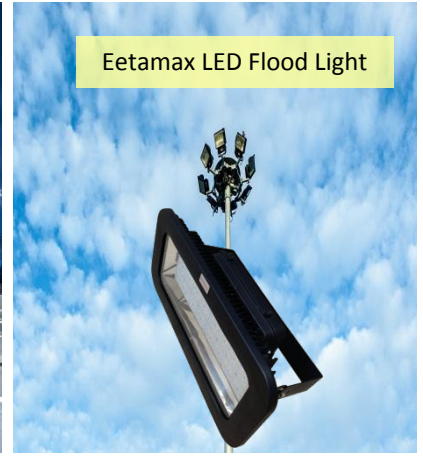
Eetamax Product Range



Eetamax LED High bays



Eetamax LED Street Lights



Eetamax LED Flood Light



Maintenance free performance



Lumen Maintenance over the years



High Efficacy



Installation Base of Many MNC Clients



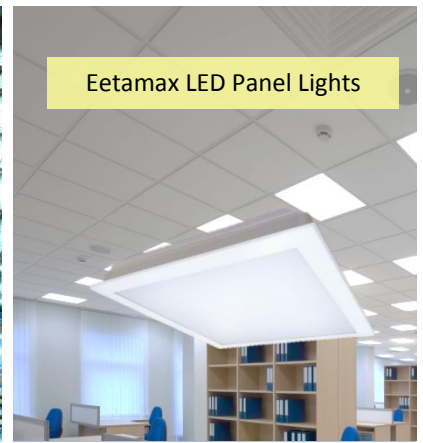
More than Two decades in Lighting Industry



Eetamax Cleanroom Lights



Eetamax Flameproof Lights



Eetamax LED Panel Lights

Lighting Control Solutions

Lighting Management System



Smart Street Lighting

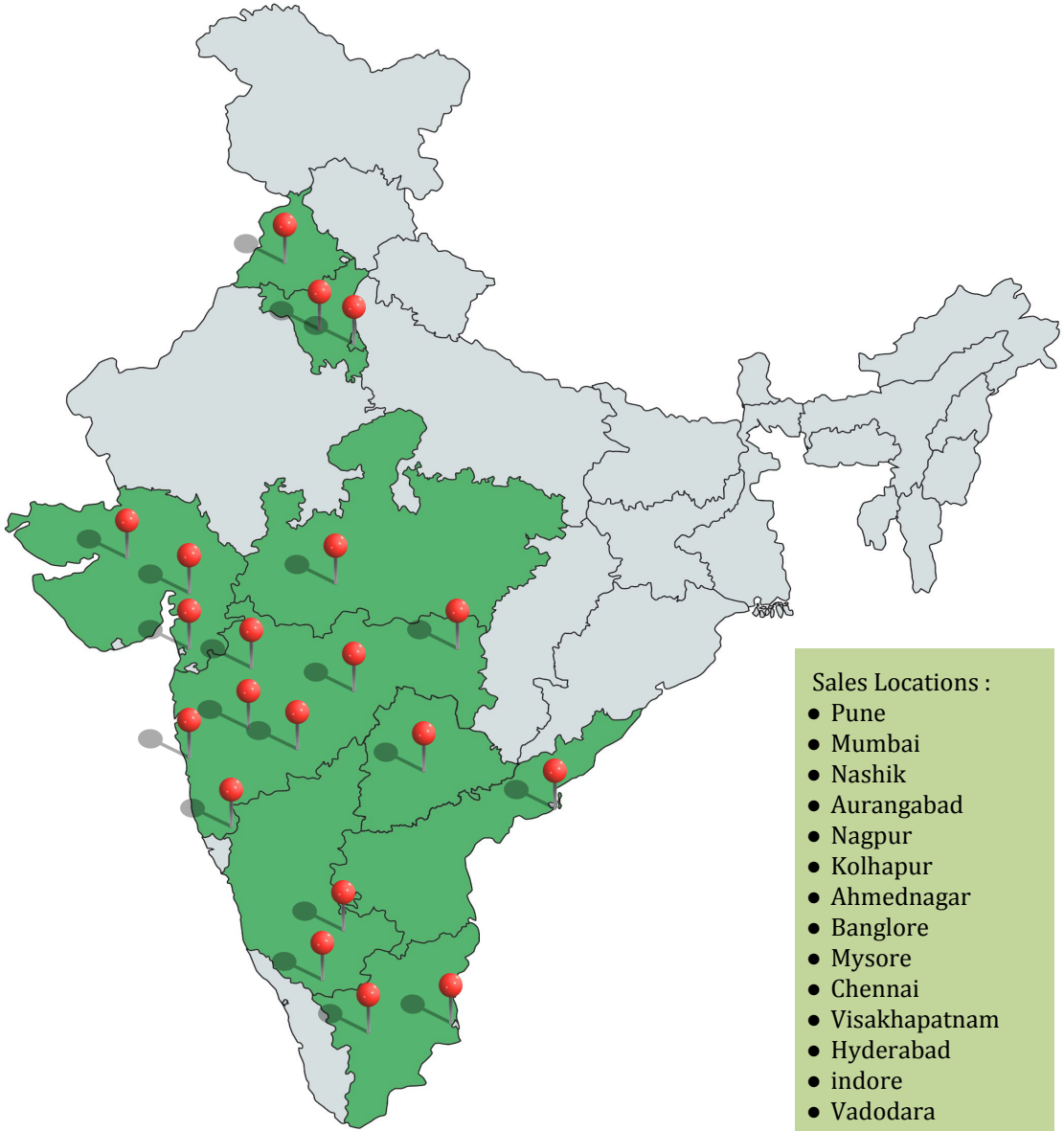


Human Centric Lighting





Sales Locations



Sales Locations :

- Pune
- Mumbai
- Nashik
- Aurangabad
- Nagpur
- Kolhapur
- Ahmednagar
- Banglore
- Mysore
- Chennai
- Visakhapatnam
- Hyderabad
- indore
- Vadodara
- Surat
- Ahmedabad
- Ludhiana
- Delhi

Contact Us

Eetamax Energy Solutions Pvt. Ltd.

L-141,MIDC Industrial Area, Ahmednagar- 414111,Maharashtra India

Email : marketing@eetamax.com | Mobile : 9552002173 | Website : www.eetamax.com

Follow Us on Social Media

