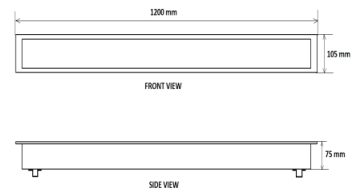
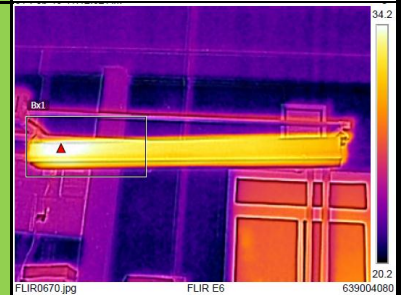
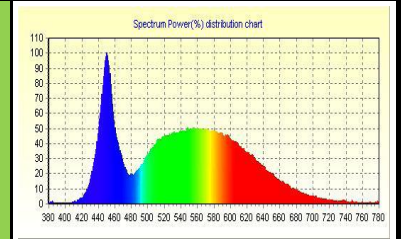


MODEL NAME
EELS 60W 4ft Channel TG

| Characteristic | | Parameters | |
|---------------------------------|---|--|--|
| MECHANICAL SPECIFICATION | Fixture Housing | Fitting housing in Sheet Steel with Powder Coating | |
| | Fixture Dimension | 1200 mm X 105 mm X 75 mm | |
| | Diffuser Closure | Clear Polycarbonate/ Toughened glass | |
| | Weight | 3.6 Kg | |
| | IP Standard | IP40 | |
| LUMINARIES | Total Wattage | 60 Watts | |
| | Initial Lumen | 6900 Lumen | |
| | Luminaire Efficacy (Lm/Watt) | 115 Lm/W | |
| | Life | 50,000 Burning Hours | |
| | Starting Time | Rapid (0.2 sec) | |
| | Operating Temperature | From 0° to +60° C | |
| LED DRIVER | Type of Driver | Constant Current (CC) | |
| | Input Voltage Range | 150 VAC ~ 265 VAC | |
| | Frequency Range | 50 Hz | |
| | Power factor | > 0.98 | |
| | Total Harmonic Distortion | < 10 % | |
| | Surge Protection | 3.75 Kv | |
| | Protection | Surge Protection, Output short circuit protection, Over load Protection, Over Voltage Protection | |
| LED LAMP | Light Source | SMD LED | |
| | Lamp Efficacy | > 150 Lm/W | |
| | Colour Temperature | 3000 K - 6500 K | |
| | CRI | > 80 | |
| | Certification/Report | LM80 / Photo Bio.Test | |
| | Identification Feature | Unique Serial No.Printed on each Lamp | |
| OPTICS | Beam Angle | 120° | |
| | Optics Type | Clear Polycarbonate for glare symmetric light distribution | |
| | MOC of Optics | Clear Polycarbonate Cover | |
| APPLICATION | The luminaire can be used for lighting in Offices, Commercial Showrooms, Hotels, Institutes etc | | |

PRODUCT IMAGE

SCHEMATIC IMAGE

THERMAL IMAGE

LED SPECTRUM

LIGHT DISTRIBUTION
