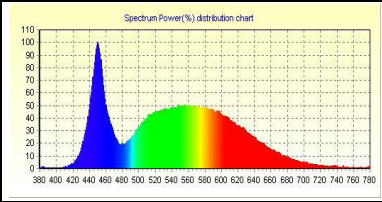
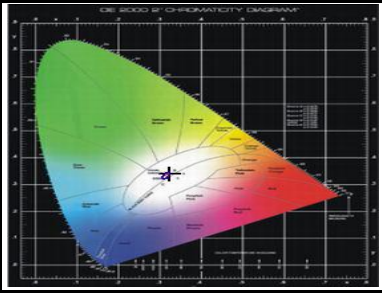
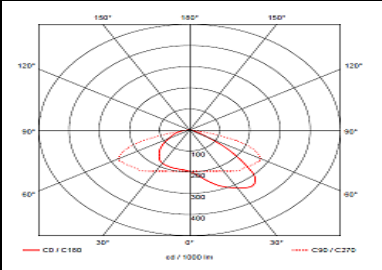
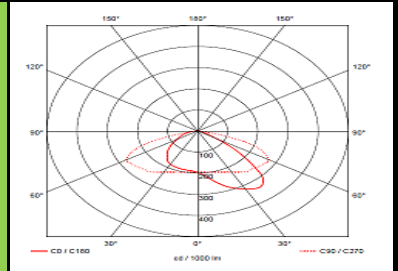
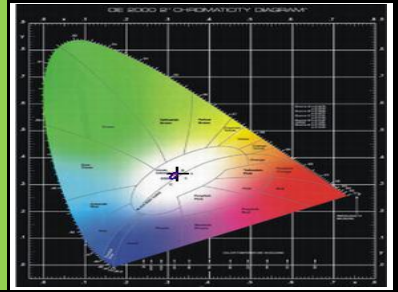
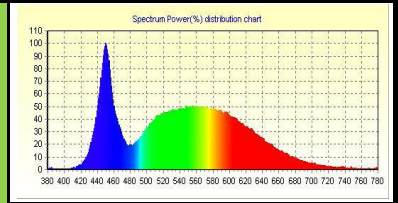
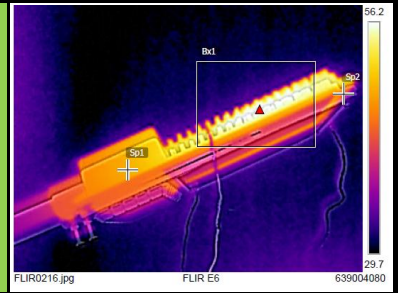
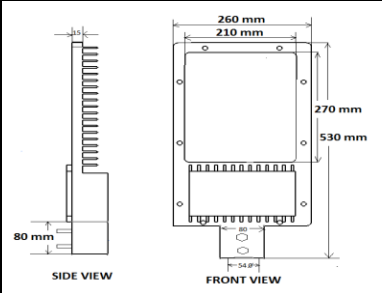


MODEL NAME
EELS 100W ML SL with lens + SPD

Characteristic		Parameters	
MECHANICAL SPECIFICATION	Fixture Housing	Pressure Die Cast Aluminium, with Side Contour, Closed Appearance, Highly Weather Resistance, Powder-coated. Toughened Glass Safety Cover is also provided.	PRODUCT IMAGE
	Fixture Dimension	530 mm X 260 mm	
	Pipe ID	54 mm	
	Diffuser Closure	Toughened Glass	
	Weight	5.270 Kg	
LUMINARIES	IP Standard	IP65	SCHEMATIC IMAGE
	Total Wattage	100 Watts	
LED DRIVER	Initial Lumen	12000 Lumen	THERMAL IMAGE
	Luminaire Efficacy (Lm/Watt)	120 Lm/W	
	Life	50,000 Burning Hours	
	Starting Time	Rapid (0.2 sec)	
	Operating Temperature	From -20° to +60° C	
	Type of Driver	Constant Current (CC)	
LED LAMP	Input Voltage Range	150 VAC ~ 265 VAC	LED SPECTRUM
	Frequency Range	50 Hz	
	Power factor	> 0.98	
	Total Harmonic Distortion	< 10 %	
	Surge Protection	3.75 Kv	
	Protection	Surge Protection, Output Short Circuit Protection, Over Load Protection, Over Voltage Protection	
LED LAMP	Light Source	SMD LED	LIGHT DISTRIBUTION
	Lamp Efficacy	> 150 Lm/W	
	Colour Temperature	3000 K - 6500 K	
	CRI	> 70	
OPTICS	Certification/Report	LM80 / Photo Bio.Test	 
	Identification Feature	Unique Serial No. Printed on each Lamp	
OPTICS	Beam Angle	95° X 145°	
	Optics Type	PC/PMMA lens	
	MOC of Optics	PC/PMMA	


APPLICATION

The luminaires can be used for lighting of important roadways, secondary roads, roads in industrial & residential areas etc

