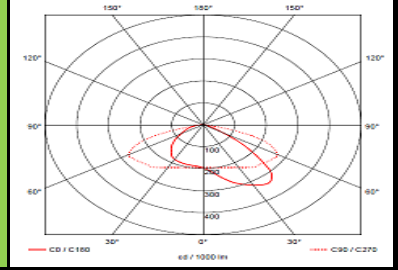
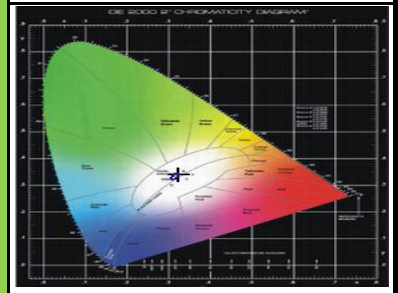
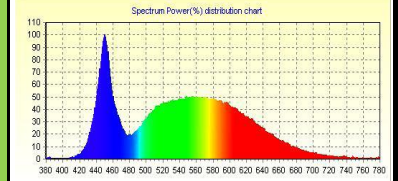
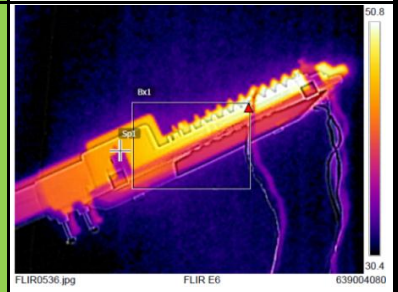
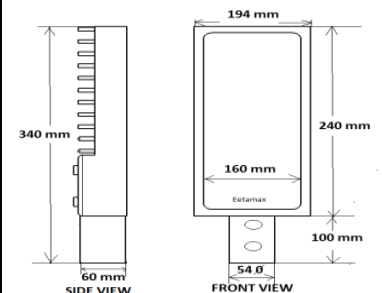


**MODEL NAME**
**EELS 50W ML SL with lens + SPD**

Characteristic		Parameters	
<b>MECHANICAL SPECIFICATION</b>	Fixture Housing	Pressure Die Cast Aluminium, with Side Contour, Closed Appearance, Highly Weather Resistance, Powder-coated. Toughened Glass Safety Cover is also provided.	<b>PRODUCT IMAGE</b>
	Fixture Dimension	340 mm X 194 mm	
	Pipe ID	52 mm	
	Diffuser Closure	Toughened Glass	
	Weight	3.5 Kg	
	IP Standard	IP65	
<b>LUMINARIES</b>	Total Wattage	50 Watts	<b>SCHEMATIC IMAGE</b>
	Initial Lumen	6000 Lumen	
	Luminaire Efficacy (Lm/Watt)	120 Lm/W	
	Life	50,000 Burning Hours	
	Starting Time	Rapid (0.2 sec)	
	Operating Temperature	From -20° to +60° C	
<b>LED DRIVER</b>	Type of Driver	Constant Current (CC)	<b>THERMAL IMAGE</b>
	Input Voltage Range	150 VAC ~ 265 VAC	
	Frequency Range	50 Hz	
	Power factor	> 0.98	
	Total Harmonic Distortion	< 10 %	
	Surge Protection	3.75 Kv	
<b>LED LAMP</b>	Protection	Surge Protection, Output Short Circuit Protection, Over Load Protection, Over Voltage Protection	<b>LED SPECTRUM</b>
	Light Source	SMD LED	
	Lamp Efficacy	> 150 Lm/W	
	Colour Temperature	3000 K - 6500 K	
	CRI	> 70	
	Certification/Report	LM80 / Photo Bio.Test	
<b>OPTICS</b>	Identification Feature	Unique Serial No. Printed on each Lamp	<b>LIGHT DISTRIBUTION</b>
	Beam Angle	95° X 145°	
<b>OPTICS</b>	Optics Type	PC/PMMA lens	<b>LIGHT DISTRIBUTION</b>
	MOC of Optics	PC/PMMA	


**APPLICATION**

The luminaires can be used for lighting of important roadways, secondary roads, roads in industrial &amp; residential areas etc

