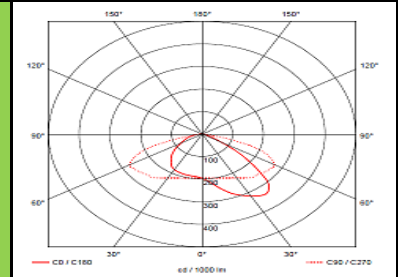
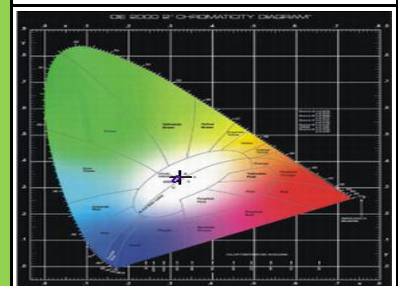
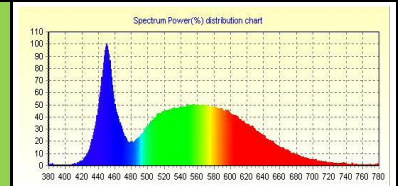
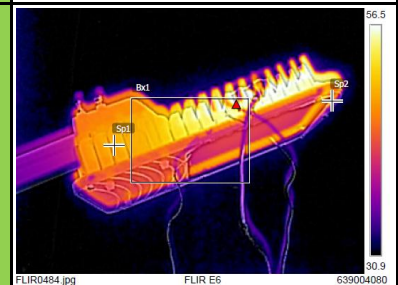
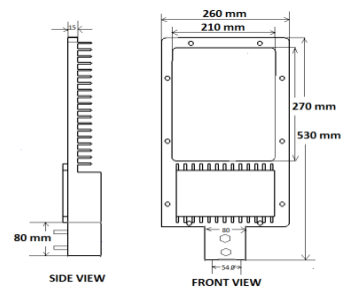


MODEL NAME

EELS 80W ML SL with lens + SPD

Characteristic		Parameters	
MECHANICAL SPECIFICATION	Fixture Housing	Pressure Die Cast Aluminium, with Side Contour, Closed Appearance, Highly Weather Resistance, Powder-coated. Toughened Glass Safety Cover is also provided.	PRODUCT IMAGE
	Fixture Dimension	530 mm X 260 mm	
	Pipe ID	54 mm	
	Diffuser Closure	Toughened Glass	
	Weight	5.270 Kg	
	IP Standard	IP65	SCHEMATIC IMAGE
LUMINARIES	Total Wattage	80 Watts	THERMAL IMAGE
	Initial Lumen	9600 Lumen	
	Luminaire Efficacy (Lm/Watt)	120 Lm/W	
	Life	50,000 Burning Hours	
	Starting Time	Rapid (0.2 sec)	
	Operating Temperature	From -20° to +60° C	
LED DRIVER	Type of Driver	Constant Current (CC)	LED SPECTRUM
	Input Voltage Range	150 VAC ~ 265 VAC	
	Frequency Range	50 Hz	
	Power factor	> 0.98	
	Total Harmonic Distortion	< 10 %	
	Surge Protection	3.75 Kv	
	Protection	Surge Protection, Output Short Circuit Protection, Over Load Protection, Over Voltage Protection	
LED LAMP	Light Source	SMD LED	LIGHT DISTRIBUTION
	Lamp Efficacy	> 150 Lm/W	
	Colour Temperature	3000 K - 6500 K	
	CRI	> 70	
	Certification/Report	LM80 / Photo Bio.Test	
	Identification Feature	Unique Serial No. Printed on each Lamp	
	Beam Angle	95° X 145°	
OPTICS	Optics Type	PC/PMMA lens	LED SPECTRUM
	MOC of Optics	PC/PMMA	
			LIGHT DISTRIBUTION


APPLICATION

The luminaires can be used for lighting of important roadways, secondary roads, roads in industrial & residential areas etc

