

**MODEL NAME**
**EELS 40W ML SL**
**Characteristic**
**Parameters**
**MECHANICAL SPECIFICATION**
**Fixture Housing**

Pressure Die Cast Aluminium, with Side Contour, Closed Appearance, Highly Weather Resistance, Powder-coated. Toughened Glass Safety Cover is also provided.

**Fixture Dimension**

400 mm X 135 mm

**Pipe ID**

38 mm

**Diffuser Closure**

Toughened Glass

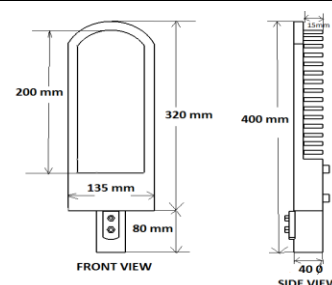
**Weight**

1.5 Kg

**IP Standard**

IP65

**PRODUCT IMAGE**

**SCHEMATIC IMAGE**

**LUMINARIES**
**Total Wattage**

40 Watts

**Initial Lumen**

4800 Lumen

**Luminaire Efficacy (Lm/Watt)**

120 Lm/W

**Life**

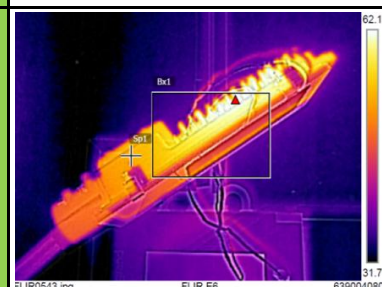
50,000 Burning Hours

**Starting Time**

Rapid (0.2 sec)

**Operating Temperature**

From -20° to +60° C

**THERMAL IMAGE**

**LED DRIVER**
**Type of Driver**

Constant Current (CC)

**Input Voltage Range**

150 VAC ~ 265 VAC

**Frequency Range**

50 Hz

**Power factor**

&gt; 0.98

**Total Harmonic Distortion**

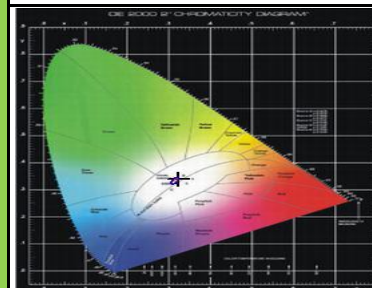
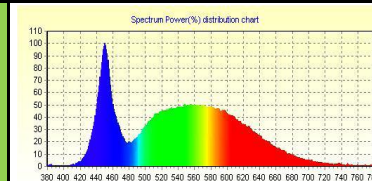
&lt; 10 %

**Surge Protection**

3.75 Kv

**Protection**

Surge Protection, Output Short Circuit Protection, Over Load Protection, Over Voltage Protection

**LED SPECTRUM**

**LED LAMP**
**Light Source**

SMD LED

**Lamp Efficacy**

&gt; 150 Lm/W

**Colour Temperature**

3000 K - 6500 K

**CRI**

&gt; 70

**Certification/Report**

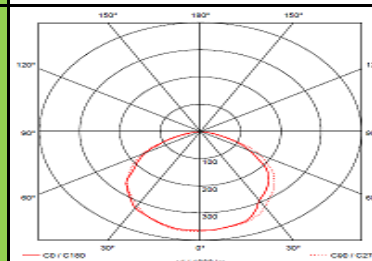
LM80 / Photo Bio.Test

**Identification Feature**

Unique Serial No. Printed on each Lamp

**Beam Angle**

120°

**LIGHT DISTRIBUTION**

**OPTICS**
**Optics Type**

N.A.

**MOC of Optics**

N.A.

**APPLICATION**

The luminaires can be used for lighting of important roadways, secondary roads, roads in industrial &amp; residential areas etc

