

MODEL NAME
EELS 90W ML SL
Characteristic
Parameters
MECHANICAL SPECIFICATION
Fixture Housing

Pressure Die Cast Aluminium, with Side Contour, Closed Appearance, Highly Weather Resistance, Powder-coated. Toughened Glass Safety Cover is also provided.

Fixture Dimension

530 mm X 260 mm

Pipe ID

54 mm

Diffuser Closure

Toughened Glass

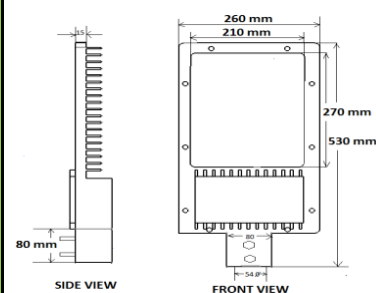
Weight

5.270 Kg

IP Standard

IP65

PRODUCT IMAGE

SCHEMATIC IMAGE

LUMINARIES
Total Wattage

90 Watts

Initial Lumen

10800 Lumen

Luminaire Efficacy (Lm/Watt)

120 Lm/W

Life

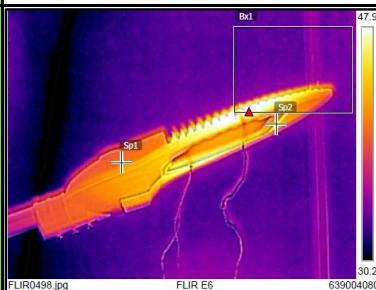
50,000 Burning Hours

Starting Time

Rapid (0.2 sec)

Operating Temperature

From -20° to +60° C

THERMAL IMAGE

LED DRIVER
Type of Driver

Constant Current (CC)

Input Voltage Range

150 VAC ~ 265 VAC

Frequency Range

50 Hz

Power factor

> 0.98

Total Harmonic Distortion

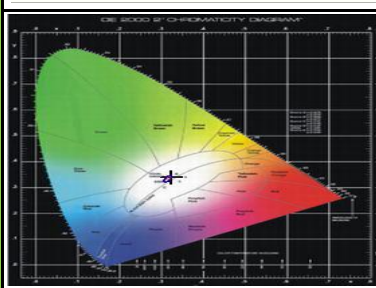
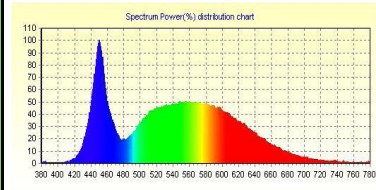
< 10 %

Surge Protection

3.75 Kv

Protection

Surge Protection, Output Short Circuit Protection, Over Load Protection, Over Voltage Protection

LED SPECTRUM

LED LAMP
Light Source

SMD LED

Lamp Efficacy

> 150 Lm/W

Colour Temperature

3000 K - 6500 K

CRI

> 70

Certification/Report

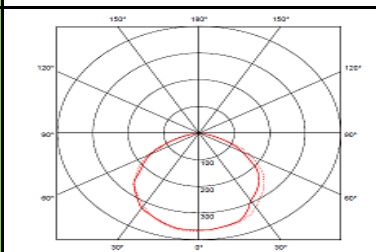
LM80 / Photo Bio.Test

Identification Feature

Unique Serial No. Printed on each Lamp

Beam Angle

120°

LIGHT DISTRIBUTION

OPTICS
Optics Type

N.A.

MOC of Optics

N.A.

APPLICATION

The luminaires can be used for lighting of important roadways, secondary roads, roads in industrial & residential areas etc

