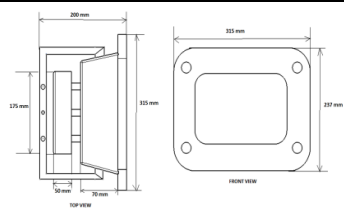
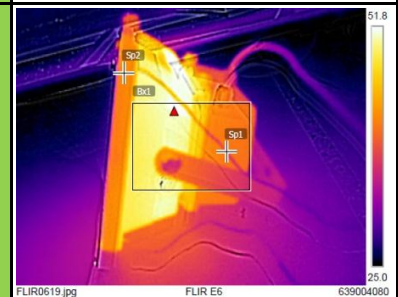
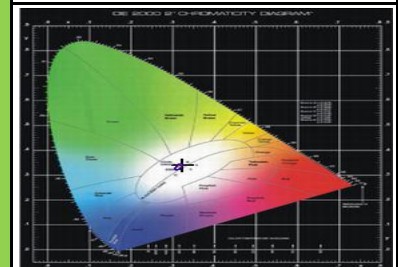
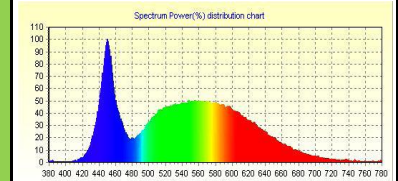


**MODEL NAME**
**EELS 50W ML FL with lens + SPD**

Characteristic		Parameters	
<b>MECHANICAL SPECIFICATION</b>	Fixture Housing	Fitting housing in Aluminium Die Casting	
	Fixture Dimension	315 mm X 237 mm X 200 mm	
	Diffuser Closure	Toughened Glass	
	Weight	2.890 Kg	
	IP Standard	IP65	
<b>LUMINARIES</b>	Total Wattage	50 Watts	
	Initial Lumen	6000 Lumen	
	Luminaire Efficacy (Lm/Watt)	120 Lm/W	
	Life	50,000 Burning Hours	
	Starting Time	Rapid (0.2 sec)	
	Operating Temperature	From -20° to +60° C	
<b>LED DRIVER</b>	Type of Driver	Constant Current (CC)	
	Input Voltage Range	150 VAC ~ 265 VAC	
	Frequency Range	50 Hz	
	Power factor	> 0.98	
	Total Harmonic Distortion	< 10 %	
	Surge Protection	3.75 Kv	
	Protection	Surge Protection, Output short circuit protection, Over Load Protection, Over Voltage Protection	
<b>LED LAMP</b>	Light Source	SMD LED	
	Lamp Efficacy	> 150 Lm/W	
	Colour Temperature	3000 K - 6500 K	
	CRI	> 80	
	Certification/Report	LM80 / Photo Bio.Test	
<b>OPTICS</b>	Identification Feature	Unique Serial No.Printed on each Lamp	
	Beam Angle	60°/ 90°	
	Optics Type	PC/PMMA lens	
MOC of Optics	PC/PMMA		
<b>APPLICATION</b>	<b>Small/Medium Open Areas, Architectural &amp; Building Façade Lighting, Security Lighting, Lighting of Industrial &amp; External Storage Areas, Industrial Outdoor Areas, Ports &amp; Container Terminals, etc.</b>		

**PRODUCT IMAGE**

**SCHEMATIC IMAGE**

**THERMAL IMAGE**

**LED SPECTRUM**

**LIGHT DISTRIBUTION**
