



# Eetamax Energy Efficient Lighting Systems

## PRODUCT TECHNICAL DATASHEET



**MODEL NAME**

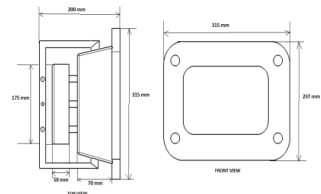
**EELS 60W ML FL with lens + SPD**

Characteristic		Parameters	
<b>MECHANICAL SPECIFICATION</b>	Fixture Housing	Fitting housing in Aluminium Die Casting	
	Fixture Dimension	315 mm X 237 mm X 200 mm	
	Diffuser Closure	Toughened Glass	
	Weight	2.8 Kg	
	IP Standard	IP65	
<b>LUMINARIES</b>	Total Wattage	60 Watts	
	Initial Lumen	7200 Lumen	
	Luminaire Efficacy (Lm/Watt)	120 Lm/W	
	Life	50,000 Burning Hours	
	Starting Time	Rapid (0.2 sec)	
	Operating Temperature	From -20° to +60° C	
<b>LED DRIVER</b>	Type of Driver	Constant Current (CC)	
	Input Voltage Range	150 VAC ~ 265 VAC	
	Frequency Range	50 Hz	
	Power factor	> 0.98	
	Total Harmonic Distortion	< 10 %	
	Surge Protection	3.75 Kv	
	Protection	Surge Protection, Output Short Circuit Protection, Over Load Protection, Over Voltage Protection	
<b>LED LAMP</b>	Light Source	SMD LED	
	Lamp Efficacy	> 150 Lm/W	
	Colour Temperature	3000 K - 6500 K	
	CRI	> 80	
	Certification/Report	LM80 / Photo Bio.Test	
	Identification Feature	Unique Serial No.Printed on each Lamp	
<b>OPTICS</b>	Beam Angle	60° / 90°	
	Optics Type	PC/PMMA lens	
MOC of Optics	PC/PMMA		

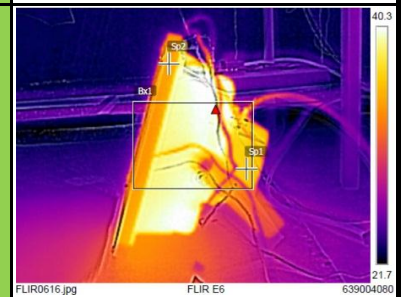
**PRODUCT IMAGE**



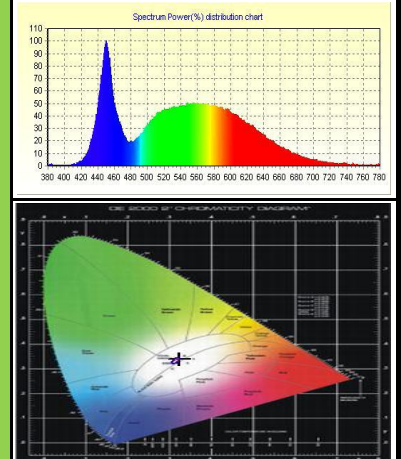
**SCHEMATIC IMAGE**



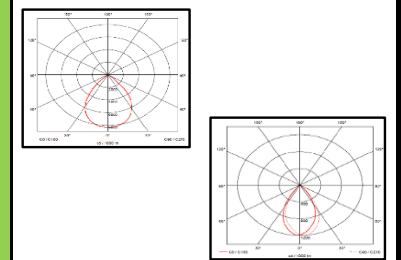
**THERMAL IMAGE**



**LED SPECTRUM**



**LIGHT DISTRIBUTION**



**APPLICATION**

Small/Medium Open Areas, Architectural & Building Façade Lighting, Security Lighting, Lighting of Industrial & External Storage Areas, Industrial Outdoor Areas, Ports & Container Terminals, etc.

