



Eetamax Energy Efficient Lighting Systems

PRODUCT TECHNICAL DATASHEET



MODEL NAME

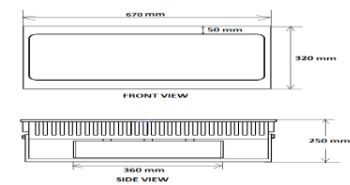
EELS 240W ML FL with SPD

Characteristic		Parameters	
MECHANICAL SPECIFICATION	Fixture Housing	Fitting housing in Aluminium Die Casting	
	Fixture Dimension	670 mm X 320 mm X 250 mm	
	Diffuser Closure	Toughened Glass	
	Weight	13 Kg	
	IP Standard	IP65	
LUMINARIES	Total Wattage	240 Watts	
	Initial Lumen	28800 Lumen	
	Luminaire Efficacy (Lm/Watt)	120 Lm/W	
	Life	50,000 Burning Hours	
	Starting Time	Rapid (0.2 sec)	
	Operating Temperature	From -20° to +60° C	
LED DRIVER	Type of Driver	Constant Current (CC)	
	Input Voltage Range	100 VAC ~ 305 VAC	
	Frequency Range	50 Hz	
	Power factor	> 0.98	
	Total Harmonic Distortion	< 10 %	
	Surge Protection	6 Kv	
	Protection	Thermal Protection + Output Short Circuit Protection, Over Load Protection, Over Voltage Protection	
LED LAMP	Light Source	SMD LED	
	Lamp Efficacy	> 150 Lm/W	
	Colour Temperature	3000 K - 6500 K	
	CRI	> 70	
	Certification/Report	LM80 / Photo Bio.Test	
	Identification Feature	Unique Serial No. Printed on each Lamp	
	Beam Angle	60° / 90°	
OPTICS	Optics Type	N.A.	
	MOC of Optics	N.A.	
APPLICATION	Small/Medium Open Areas, Architectural & Building Façade Lighting, Security Lighting, Lighting of Industrial & External Storage Areas, Industrial Outdoor Areas, Ports & Container Terminals, etc.		

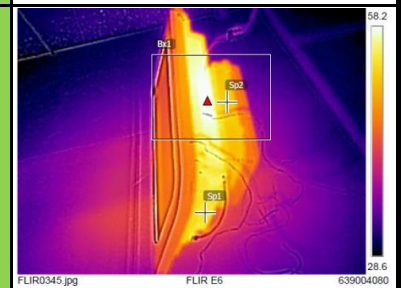
PRODUCT IMAGE



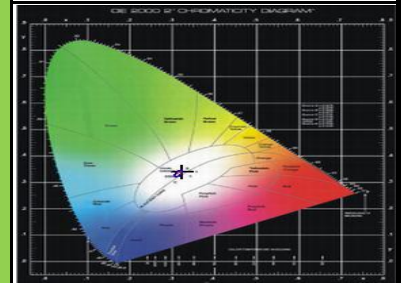
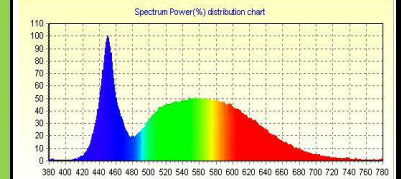
SCHEMATIC IMAGE



THERMAL IMAGE



LED SPECTRUM



LIGHT DISTRIBUTION

