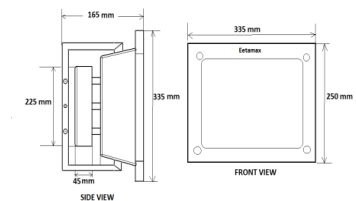
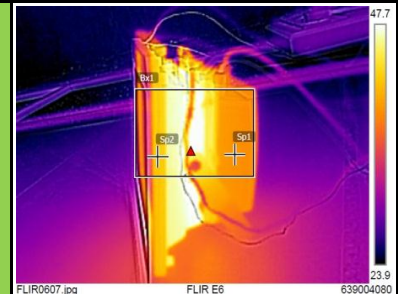
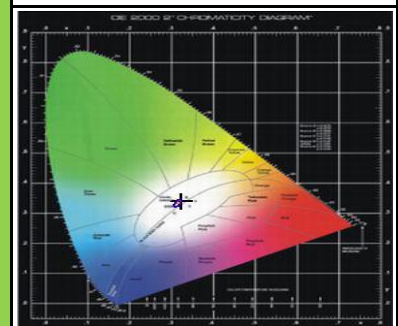
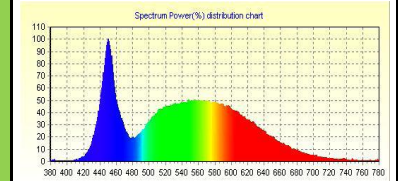
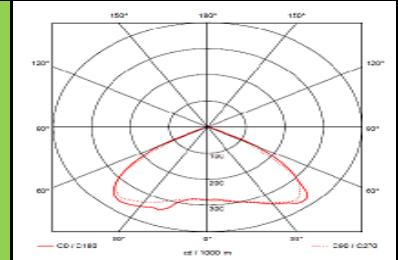


MODEL NAME
EELS 80W ML FL with SPD

Characteristic		Parameters	
MECHANICAL SPECIFICATION	Fixture Housing	Fitting housing in Aluminium Die Casting	
	Fixture Dimension	335 mm X 250 mm X 165 mm	
	Diffuser Closure	Toughened Glass	
	Weight	6.650 Kg	
	IP Standard	IP65	
LUMINARIES	Total Wattage	80 Watts	
	Initial Lumen	9600 Lumen	
	Luminaire Efficacy (Lm/Watt)	120 Lm/W	
	Life	50,000 Burning Hours	
	Starting Time	Rapid (0.2 sec)	
	Operating Temperature	From -20° to +60° C	
LED DRIVER	Type of Driver	Constant Current (CC)	
	Input Voltage Range	150 VAC ~ 265 VAC	
	Frequency Range	50 Hz	
	Power factor	> 0.98	
	Total Harmonic Distortion	< 10 %	
	Surge Protection	3.75 Kv	
	Protection	Surge Protection, Output Short Circuit Protection, Over Load Protection, Over Voltage Protection	
LED LAMP	Light Source	SMD LED	
	Lamp Efficacy	> 150 Lm/W	
	Colour Temperature	3000 K - 6500 K	
	CRI	> 70	
	Certification/Report	LM80 / Photo Bio.Test	
OPTICS	Identification Feature	Unique Serial No. Printed on each Lamp	
	Beam Angle	60° / 90°	
	Optics Type	N.A.	
MOC of Optics	N.A.		

PRODUCT IMAGE

SCHEMATIC IMAGE

THERMAL IMAGE

LED SPECTRUM

LIGHT DISTRIBUTION

APPLICATION

Small/Medium Open Areas, Architectural & Building Façade Lighting, Security Lighting, Lighting of Industrial & External Storage Areas, Industrial Outdoor Areas, Ports & Container Terminals, etc.

