

**MODEL NAME**

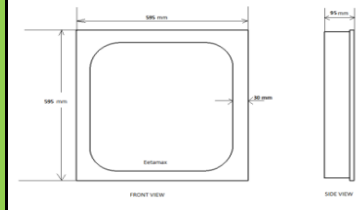
**EELS 60W 2X2 Recess PNL**

Characteristic		Parameters	
<b>MECHANICAL SPECIFICATION</b>	<b>Fixture Housing</b>	Fitting Housing in Sheet Steel with Powder Coating	
	<b>Fixture Dimension</b>	595 mm X 595 mm X 95 mm	
	<b>Diffuser Closure</b>	Milky Diffuser	
	<b>Weight</b>	3.5 Kg	
	<b>IP Standard</b>	IP40	
<b>LUMINARIES</b>	<b>Total Wattage</b>	60 Watts	
	<b>Initial Lumen</b>	6600 Lumen	
	<b>Luminaire Efficacy (Lm/Watt)</b>	110 Lm/W	
	<b>Life</b>	50,000 Burning Hours	
	<b>Starting Time</b>	Rapid (0.2 sec)	
	<b>Operating Temperature</b>	From 0° to +60° C	
<b>LED DRIVER</b>	<b>Type of Driver</b>	Constant Current (CC)	
	<b>Input Voltage Range</b>	150 VAC ~ 265 VAC	
	<b>Frequency Range</b>	50 Hz	
	<b>Power factor</b>	> 0.98	
	<b>Total Harmonic Distortion</b>	< 10 %	
	<b>Surge Protection</b>	3.75 Kv	
	<b>Protection</b>	Surge Protection, Output Short Circuit Protection, Over Load Protection, Over Voltage Protection	
<b>LED LAMP</b>	<b>Light Source</b>	SMD LED	
	<b>Lamp Efficacy</b>	> 150 Lm/W	
	<b>Colour Temperature</b>	3000 K - 6500 K	
	<b>CRI</b>	> 80	
	<b>Certification/Report</b>	LM80 / Photo Bio.Test	
	<b>Identification Feature</b>	Unique Serial No. Printed on each Lamp	
	<b>Beam Angle</b>	120°	
<b>OPTICS</b>	<b>Optics Type</b>	Polystyrene Cover for Glare-Free Wide Light Distribution.	
	<b>MOC of Optics</b>	Polystyrene Cover	
<b>APPLICATION</b>		The luminaire can be used for lighting in Offices, Commercial Showrooms, Hotels, Institutes etc	

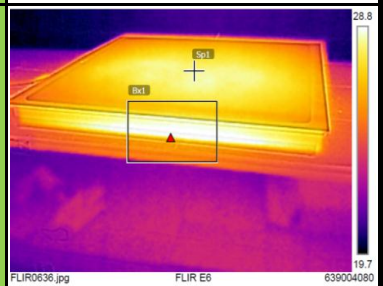
**PRODUCT IMAGE**



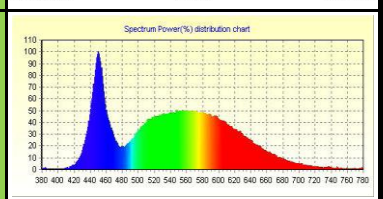
**SCHEMATIC IMAGE**



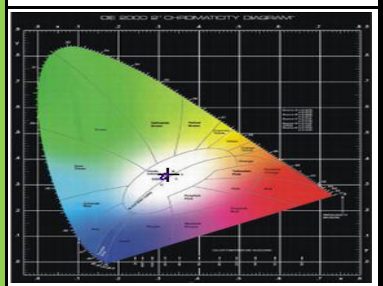
**THERMAL IMAGE**



**LED SPECTRUM**



**LED SPECTRUM**



**LIGHT DISTRIBUTION**

