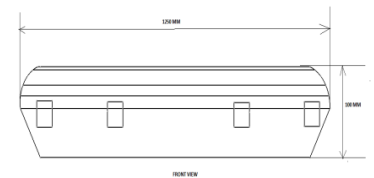
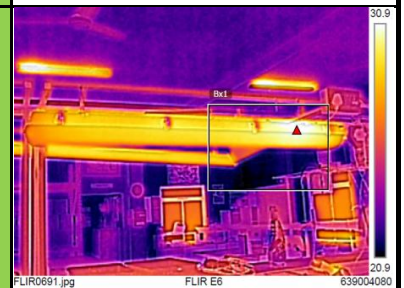
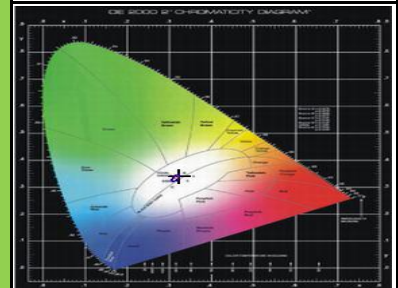
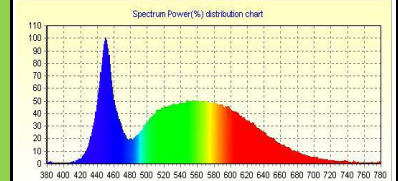
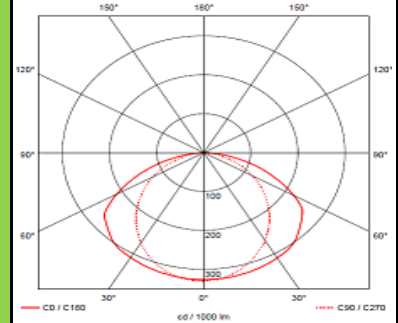


MODEL NAME
EELS 50W 4ft Channel IP65

Characteristic		Parameters	
MECHANICAL SPECIFICATION	Fixture Housing	Fitting Housing Polycarbonate	
	Fixture Dimension	1250 mm X 100 mm	
	Diffuser Closure	Milky Polycarbonate Cover	
	Weight	1.6 Kg	
	IP Standard	IP65	
LUMINARIES	Total Wattage	50 Watts	
	Initial Lumen	5500 Lumen	
	Luminaire Efficacy (Lm/Watt)	110 Lm/W	
	Life	50,000 Burning Hours	
	Starting Time	Rapid (0.2 sec)	
	Operating Temperature	From -20° to +60° C	
LED DRIVER	Type of Driver	Constant Current (CC)	
	Input Voltage Range	150 VAC ~ 265 VAC	
	Frequency Range	50 Hz	
	Power factor	> 0.98	
	Total Harmonic Distortion	< 10 %	
	Surge Protection	3.75 Kv	
	Protection	Surge Protection, Output Short Circuit Protection, Over Load Protection, Over Voltage Protection	
LED LAMP	Light Source	SMD LED	
	Lamp Efficacy	> 150 Lm/W	
	Colour Temperature	3000 K - 6500 K	
	CRI	> 80	
	Certification/Report	LM80 / Photo Bio.Test	
	Identification Feature	Unique Serial No. Printed on each Lamp	
OPTICS	Beam Angle	120°-170°	
	Optics Type	Milky Polycarbonate Cover for Glare-free symmetric light distribution	
	MOC of Optics	Milky Polycarbonate Cover	

PRODUCT IMAGE

SCHEMATIC IMAGE

THERMAL IMAGE

LED SPECTRUM

LIGHT DISTRIBUTION

APPLICATION

The luminaire can be used for lighting in Food Industries, Pharmaceuticals Industries, Chemical Industries etc. where close type of fittings (Dustproof & Waterproof) are required.